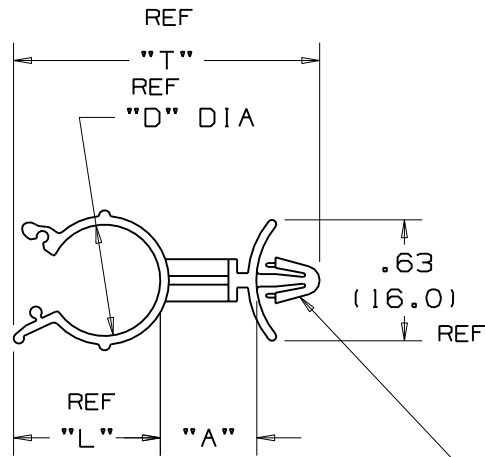
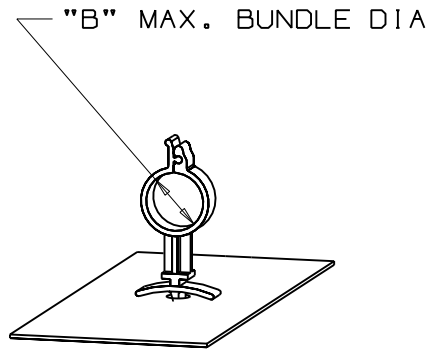
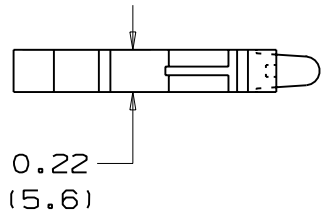


THIS COPY IS PROVIDED ON A RESTRICTED BASIS AND IS NOT TO BE USED IN ANY WAY DETRIMENTAL TO THE INTERESTS OF PANDUIT CORP.



PANDUIT PART NO.	"A" in/mm	"L" in/mm REF	"D" in/mm REF	"T" in/mm REF	"B" MAX. BUNDLE DIA. in/mm	WEIGHT lbs. 100 (g) pcs
WS25-25	0.25(6.4)	0.46(11.7)	0.30(7.6)	1.04(26.4)	0.25(6.4)	0.11(50)
WS25-50	0.50(12.7)	0.46(11.7)	0.30(7.6)	1.29(32.8)	0.25(6.4)	0.13(59)
WS25-75	0.75(19.1)	0.46(11.7)	0.30(7.6)	1.54(39.1)	0.25(6.4)	0.15(68)
WS35-25	0.25(6.4)	0.57(14.5)	0.42(10.7)	1.15(29.2)	0.35(8.9)	0.12(54)
WS35-50	0.50(12.7)	0.57(14.5)	0.42(10.7)	1.40(35.6)	0.35(8.9)	0.14(64)
WS35-75	0.75(19.1)	0.57(14.5)	0.42(10.7)	1.65(41.9)	0.35(8.9)	0.16(73)
WS50-25	0.25(6.4)	0.72(18.3)	0.58(14.7)	1.30(33.0)	0.47(11.9)	0.14(64)
WS50-50	0.50(12.7)	0.72(18.3)	0.58(14.7)	1.55(39.4)	0.47(11.9)	0.16(73)
WS50-75	0.75(19.1)	0.72(18.3)	0.58(14.7)	1.80(45.7)	0.47(11.9)	0.18(82)
WS75-25	0.25(6.4)	1.07(27.2)	0.96(24.4)	1.65(41.9)	0.78(19.8)	0.16(73)
WS75-50	0.50(12.7)	1.07(27.2)	0.96(24.4)	1.90(48.3)	0.78(19.8)	0.18(82)
WS75-75	0.75(19.1)	1.07(27.2)	0.96(24.4)	2.15(54.6)	0.78(19.8)	0.20(91)

FITS 0.187(4.7)/0.192(4.8) DIA. HOLE
PANEL THK. 0.03(0.8)/0.08(2.0)



NOTES:

- SEE CURRENT PRICE SHEET FOR PART NUMBER SUFFIX DESIGNATION FOR PACKAGE SIZE AND COLOR.

(DIMENSIONS IN PARENTHESES ARE IN METRIC.)

CAD FILENAME/LAYERS

G00239CT_PB_WCS_03



CORP.

TINLEY PARK, ILLINOIS

WIRE CLIP STANDOFF

REV	DATE	BY	CHK	DESCRIPTION	ECN	R	CUST	SUP
3	1/25/06	JAD		REMOVED 'M' FROM END OF EACH PART NO.	GB0239CT	3		
2	6/27/01	LGG		UPDATED FOR WEB (ADDED REF)	GB0239CT	2		
1	7/31/95	CBJ		ADDED NOTE	GB0239CT	1		
R	7/26/95	CBJ		INITIAL RELEASE	GB0239CT	R		

UNLESS OTHERWISE SPECIFIED, DIMENSIONAL TOLERANCES ARE: (.X) ±0.1(2.5) (.XXX) ±0.020(1.5) (.XX) ±0.05(1.3) ANGLES ±5°		DRAWN BY CBJ DATE 7/26/95 CHK'D	MAT'L: NYLON 6/6
UNLESS OTHERWISE SPECIFIED, ALL DIMENSIONS ARE GIVEN IN INCHES, THIRD ANGLE PROJECTION.			
SCALE			

DRAWING NO. GB0239CT		DWG SIZE A
-------------------------	--	------------------